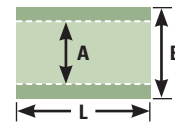


# Standard Sizes for FCJ Bearings - Metric Units



All corners are broken to permit proper installation.

## 2.5 MM Wall Series

Nominal I.D. x O.D.	I.D. (A)	O.D. (B)	Recommended Housing Bore	Press Fit	Recommended Shaft Size	FCJ Part Number
12 x 17	12.143	17.068	17.018	.068	12.000	FCJE12E17-
	12.093	17.043	17.000	.025	11.982	
15 x 20	15.146	20.071	20.021	.071	15.000	FCJE15E20-
	15.096	20.046	20.000	.025	14.982	
18 x 23	18.201	23.096	23.021	.096	18.000	FCJE18E23-
	18.121	23.046	23.000	.025	17.982	
20 x 25	20.201	25.096	25.021	.096	20.000	FCJE20E25-
	20.121	25.046	25.000	.025	19.979	
22 x 27	22.201	27.096	27.021	.096	22.000	FCJE22E27-
	22.121	27.046	27.000	.025	21.979	
25 x 30	25.205	30.100	30.025	.100	25.000	FCJE25E30-
	25.125	30.050	30.000	.025	24.979	
30 x 35	30.205	35.100	35.025	.100	30.000	FCJE30E35-
	30.125	35.050	35.000	.025	29.979	
35 x 40	35.225	40.100	40.025	.100	35.000	FCJE35E40-
	35.125	40.050	40.000	.025	34.975	
40 x 45	40.225	45.100	45.025	.100	40.000	FCJE40E45-
	40.125	45.050	45.000	.025	39.975	
45 x 50	45.230	50.105	50.025	.105	45.000	FCJE45E50-
	45.130	50.055	50.000	.030	44.975	
50 x 55	50.225	55.105	55.030	.105	50.000	FCJE50E55-
	50.155	55.055	55.000	.025	49.975	

## 5.0 MM Wall Series

Nominal I.D. x O.D.	I.D. (A)	O.D. (B)	Recommended Housing Bore	Press Fit	Recommended Shaft Size	FCJ Part Number
30 x 40	30.205	40.100	40.025	.100	30.000	FCJE30E40-
	30.125	40.050	40.000	.025	29.979	
35 x 45	35.225	45.100	45.025	.100	35.000	FCJE35E45-
	35.125	45.050	45.000	.025	34.975	
40 x 50	40.225	50.100	50.025	.100	40.000	FCJE40E50-
	40.125	50.050	50.000	.025	39.975	
45 x 55	45.230	55.105	55.030	.105	45.000	FCJE45E55-
	45.130	55.055	55.000	.025	44.975	
50 x 60	50.225	60.105	60.030	.105	50.000	FCJE50E60-
	50.155	60.055	60.000	.025	49.975	
55 x 65	55.255	65.105	65.030	.105	55.000	FCJE55E65-
	55.155	65.055	65.000	.025	54.970	
60 x 70	60.255	70.105	70.030	.105	60.000	FCJE60E70-
	60.155	70.055	70.000	.025	59.970	
65 x 75	65.255	75.105	75.030	.105	65.000	FCJE65E75-
	65.155	75.055	75.000	.025	64.970	
70 x 80	70.305	80.105	80.030	.105	70.000	FCJE70E80-
	70.205	80.055	80.000	.025	69.970	
75 x 85	75.310	85.110	85.035	.110	75.000	FCJE75E85-
	75.210	85.060	85.000	.025	74.970	
80 x 90	80.310	90.110	90.035	.110	80.000	FCJE80E90-
	80.210	90.060	90.000	.025	79.970	
85 x 95	85.360	95.110	95.035	.110	85.000	FCJE85E95-
	85.260	95.060	95.000	.025	84.965	
90 x 100	90.360	100.110	100.035	.110	90.000	FCJE90E100-
	90.260	100.060	100.000	.025	89.965	
100 x 110	100.360	110.110	110.035	.110	100.000	FCJE100E110-
	100.260	110.060	110.000	.025	99.965	
100 x 120	100.360	120.110	120.035	.110	110.000	FCJE110E120-
	100.260	120.060	120.000	.025	109.965	
120 x 130	120.365	130.115	130.040	.115	120.000	FCJE120E130-
	120.265	130.065	130.000	.025	119.965	

\*Length tolerance: +0/- .25 mm for I.D. up to and including 55 mm, +0/- .40 mm for I.D. 60 mm and larger. Sizes not listed above may be quoted upon request.

We're ready to put our engineering expertise to work for you from prototype to production.

Engineering | Custom Fabrication | Manufacturing



### CJ Composite

- Self-Lubricating
- Low weight | High Strength
- Chemical Resistance
- Direct replacement for Bronze



### Ultracomp<sup>®</sup>

- Self-Lubricating
- High Load | Low Speed
- 54,400 PSI Compressive Strength
- Exceptional Resistance to Vibration and Impact



### TriSteel<sup>™</sup>

- Self-Lubricating
- High Load | High Speed
- Metal Backed Bearing System
- 100% Lead Free



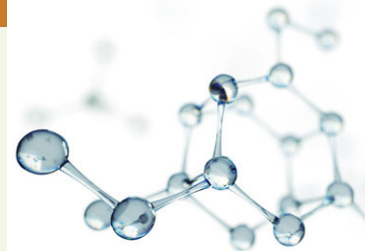
### Rulon<sup>®</sup>

- Self-Lubricating
- Low weight | High Strength
- Low Coefficient of Friction
- Chemically Resistant



### Enhanced Materials Division

- Plasma Surface Treatment
- Asymmetric & Symmetric Filtration Membranes
- Specialized Primers & Coatings
- Material ID & Selection



TriStar



Engineered Plastic Solutions<sup>™</sup>

[tstar.com](http://tstar.com)



1.800.874.7827