

Application Case Story

Meldin® 7000 Series

APPLICATION:

Diesel Turbocharger Linkage

MATERIAL:

Meldin® 7021

PART DEFINITION:

Spherical Bearing

TECHNICAL DATA:

TYPICAL DIMENSIONS:

.40" ID x .57" OD x .24" Length
(10.16mm x 14.48mm x 6.10mm)

SPEED: 1' (.3m)/min

COUNTERFACE: 304 Stainless Steel

LUBRICATION OR MEDIA:

No Lubrication

WORKING TEMPERATURE:

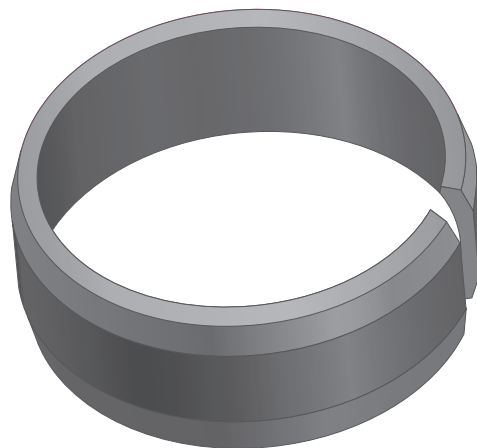
650°F (343°C) Maximum

FEATURES / BENEFITS:

This linkage bearing must operate in a continuous high temperature environment, and **Meldin® 7021** has demonstrated good low frictional properties under the high temperature condition that typically causes other bearings to seize and fail. This turbocharger linkage must operate smoothly under all circumstances, and self-lubricating **Meldin® 7021** has been tested as having the best frictional properties under these demanding high temperature conditions.



TURBOCHARGER LINKAGE



MELDIN® 7021
SPHERICAL BEARING



Saint-Gobain Performance Plastics

North America: 1-800-223-4966 Bristol, RI, USA

Europe: +32 3 458 28 28 Kontich, Belgium

Asia: +81 33 26 30 285 Tokyo, Japan

Email: sgppl.marketing@saint-gobain.com

Website: www.rulon-meldin.com

ACS-473-PDF-0707-SGCS

Meldin® is a registered trademark.
©2007 Saint-Gobain Performance Plastics

TriStar

Engineered Plastic Solutions™

Exclusive North American Distributor

1.800.874.7827 | www.tstar.com

SAINT-GOBAIN
PERFORMANCE PLASTICS