

Application Case Story

Meldin® 7000 Series

APPLICATION:

Carpet Weaving Equipment

MATERIAL:

Meldin® 7021

PART DEFINITION:

Bushing

TECHNICAL DATA:

TYPICAL DIMENSIONS:

1" ID X 1.25" OD X 1" Length
(25.4mm x 31.75mm x 25.4mm)

SPEED: 400' (121.92m)/min

COUNTERFACE:

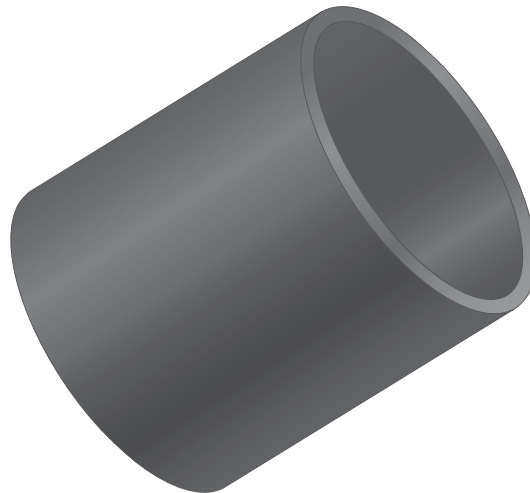
Hardened Steel Shaft, 50 Rc

WORKING TEMPERATURE:

600°F (316°C)

FEATURES / BENEFITS:

This **Meldin® 7021** bushing guides a hardened steel shaft that stuffs fabric yarn into position during the carpet weaving process. The **Meldin® 7021** is self lubricating, which effectively eliminates contamination of the carpeting from lubricants. **Meldin® 7021** replaced bronze bushings that required lubrication and caused an unacceptable amount of discarded carpet material due to oil contamination.



**MELDIN® 7021
BUSHING**



CARPET WEAVING EQUIPMENT

Saint-Gobain Performance Plastics

North America: 1-800-223-4966 Bristol, RI, USA

Europe: +32 3 458 28 28 Kontich, Belgium

Asia: +81 33 26 30 285 Tokyo, Japan

Email: sgppl.marketing@saint-gobain.com

Website: www.rulon-meldin.com

ACS-479-PDF-0608-SGCS

Meldin® is a registered trademark.
©2008 Saint-Gobain Performance Plastics

TriStar



Engineered Plastic Solutions™

Exclusive North American Distributor

1.800.874.7827 | www.tstar.com

SAINT-GOBAIN
PERFORMANCE PLASTICS